

The Garden Island Orchid Society

January-February 2007

Affiliated with the American Orchid Society

The GIOS newsletter is published by the Garden Island Orchid Society on a bi-monthly basis. Contact them at P. O. Box 1056, Hanapepe, HI 96716.

GIOS Board 2006/2007

President: Bob King, 335-3677,
bking7@hawaiiintel.net
Vice Pres. vacant
Secretary: Lenora Sorensen
Treasurer: Jerry Hollander
Ex Officio: Monroe Richman
News/Publ: Ada Koene, 742-0333,
thekoenes@cs.com
Membership: Judy Matsumoto
Library: Ann Notley.
Refreshments: Gwen Teragawa
General: Al Sugano

General Meetings 2007:

February 9
March 30-31 Spring Fantasy Show
April 13
June 8
August 10
October 12
December 14 - Christmas party

In this issue

Coming Events

President's Message

Spring Fantasy Show "Kaua'i Orchids and Art" - March 30 and 31

Doug DeMoss of Oahu to speak at February 9 General Meeting

Kaua'i Orchid & Art Festival to Premiere March 30-31 in Hanapepe

Coming Events

General Meeting February 9, 2006. Our speaker for this meeting will be Douglas DeMoss of Oahu. He will be speaking about vanilla orchids, and any other orchids you wish to discuss. For more information about Mr. De Moss, please see page 2 of this publication. The meeting will be held in the United Church of Christ in Hanapepe. Mr. De Moss will be the plant doctor for this evening and will be on duty at 6:00. He will also conduct Orchids 101. The meeting will start promptly at 7:00. Mr. De Moss was recommended to us by Scot Mitamura and members who have heard him speak say that he is excellent so you won't want to miss this.



Vanilla orchid photographed in Costa Rica by Ada Koene.

Spring Fantasy Show - March 30 and 31. - See Pages 2 and 3 for more information

President's Message

Time flies! It's almost spring show time again. Get your best flowers ready and remember March 29 after 1:00 p.m. for show setup. We probably will have four vendors. This year we will be cooperating with the Hanapepe Economic Alliance (HEA) who are planning an Orchid and Art Festival to coincide with our flower show. See Pages 2 and 3 for more details. Very little will change in regards to our show. It is just that the HEA-planned festival will run roughly at about the same time in other parts of town. We will be advertising each other's activities and they will loan us some of the Hanapepe Fine Arts for our displays. Thus our theme will be entitled "Orchids and Art" in Hanapepe. Tell your friends!

We have a special board meeting on February 18 to finalize the spring show. If you wish to get involved in other than security, selling food, or entering a plant, ask a board member. Lenora Sorensen is the Show Chair so call her if you can help. For more details see Page 2 of this newsletter. We appreciate all the help we can get. Bring a plant—who knows it might just win an award.

We the board, have been talking about having a website in order to advertise our club and events. This is still in early planning stages but if any of you have some ideas or experience, please contact me at the next meeting.

We have a very special program for you on February 9th so please plan to attend. See Page 2 for more information regarding our speaker Doug DeMoss.

Mahalo
Bob King

Spring Fantasy Show “Kaua’i Orchids and Art” - March 30 and 31

Plans are being finalized for the Spring Fantasy Show in March. The theme this year is Kaua’i Orchids and Art in conjunction with the Hanapepe Economic Alliance. The press release for this festival is included in this newsletter to help you get a feel for how the combining of these events will benefit both organizations. Our part of the show will be held on March 30 and 31. As usual, set up for the show is on Thursday afternoon, March 29, starting at 1:00 p.m. at our usual venue, the United Church of Christ in Hanapepe. Thursday evening dinner will be provided for the volunteers who are there to help with the set up on Thursday afternoon.

Those bringing plants to display should notify Lenora Sorensen by email at (lynne_sorensen@msn.com) no later than Wednesday evening, March 28 with the complete name of the plant and their own name (as they wish it to appear on the label) or send it block printed by mail (P.O. Box 331, Koloa 96756) to arrive no later than Wednesday, March 28. Display plants must arrive between 4:30 and 5:30 p.m. on Wednesday afternoon to be considered for judging the next day.

Everyone, please bring at least one orchid to display. Even if you do not think it is a prize winner, it looks a lot better to the public when we amateurs and enthusiasts care enough about our organization to participate rather than leave all the work up to the commercial growers.

Judging of the display plants will take place on Friday morning at 9:00 a.m. The show will open to the public at 1:00 p.m. or later, if the judging takes longer than anticipated.

We Need:

Baked Goods

Volunteers for Security

Helping hands to help set-up the show.

Seamstresses and Sales Persons for the crafts table. (Call Ada at 742-0333 or e-mail thekoenes@cs.com)

Last but not least--Orchids, Orchids, Orchids. Orchids for the show and orchids that you wish to donate to the club for the orchid sale.

Doug DeMoss of Oahu to speak at February 9 General Meeting

Doug DeMoss came to Oahu’s north shore 35 years ago to surf and build Custom surfboards. He became interested in tropical agriculture, and in doing so acquired his first orchid, a paphiopedilum. In searching out this rare plant in Hawaii at that time, he met Milton Warne, Oahu’s first commercial orchid grower and so began a friendship and partnership that would last 25 years. He eventually acquired sole ownership of Milton’s nursery and raised orchids at the Nuuanu location until Milton’s death in 1999.

His nursery is now located in Pupukea on Oahu’s north shore where he grows cattleyas, phalaenopsis, paphiopedilums and other exotic plants and trees.

He is a horticultural consultant and certified arborist. He is the Recipient of over 20 AOS flower awards including the Herb Hager Award for most outstanding phalaenopsis awarded in 1992. He still surfs at any opportunity!!



Vanilla planifolia blooms are only open for one day and outside of Mexico need to be hand-pollinated to produce the Vanilla pod or bean.

Photo: Greg Allikas ©

Kaua'i Orchid & Art Festival to Premiere March 30-31 in Hanapepe

The Garden Island Orchid Society and the Hanapepe Economic Alliance have agreed to Cooperate on a Kaua'i Orchid and Art Festival. Basically the GIOS part will be to coordinate their Annual Spring Fantasy Show with the festival organizers and to assist in advertising the event.

Activities are spelled out in the following press release prepared by Carol Bain.

PRESS RELEASE: **January 15, 2007** TO: ALL MEDIA*

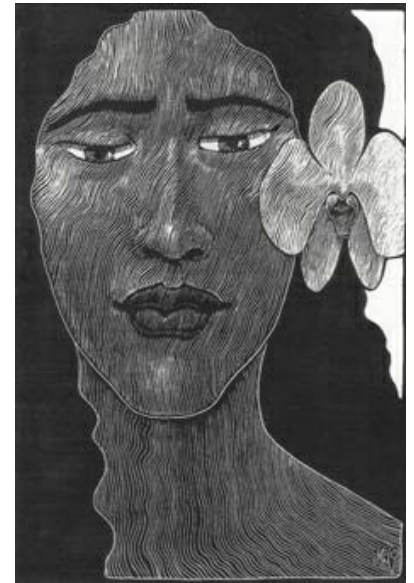
The industries of art and agriculture merge at the first annual Kaua'i Orchid and Art Festival. This new festival will be held in Hanapepe, Kaua'i, March 30 and 31, 2007. A joint effort of the Hanapepe Economic Alliance and the Garden Island Orchid

Society, a non-profit organization that offers the Spring Fantasy Orchid Show each year. The event will offer displays, educational workshops and activities in art and in orchid growing.

Art and orchid competitions will be held, and a music concert is planned. An award for the "Most Paintable Orchid" will be announced each year. Two cooking workshops will be offered on vanilla cuisine at the Hanapepe Cafe. Art workshops will be offered on basic principles of plein air painting. Classes in both art will include on-site demonstrations, evaluations, group and individual instructions.

Orchid growers and art appreciators, both visiting and on island, will be attracted to the festival, and the public will enjoy the beautiful displays of both orchids and art. A marketing and promotional campaign is underway.

An established heritage of orchid growing exists in Hanapepe that began in the 1950's with Shimonishi Orchids and others who grew and retailed along Hanapepe Road. The orchid industry continues today by the efforts of a productive group of growers around the island. In recent years, an artist community established itself in town and Hanapepe is known as the art capital of Kaua'i. Both groups share an interest to promote their products.



Art by Michelle Dick

The festival is supported in part by the Hawaii Tourism Authority and the County of Kaua'i Office of Economic Development. Businesses and individual support is welcome. For more information, call Carol (808)246-2111 or see the festival link on <<http://kauai.net/hanapepe>>



Photo by Arius Hopman



Garden Island Orchid Society
Ada Koene, Editor
P. O. Box 1624
Koloa, HI 96756